

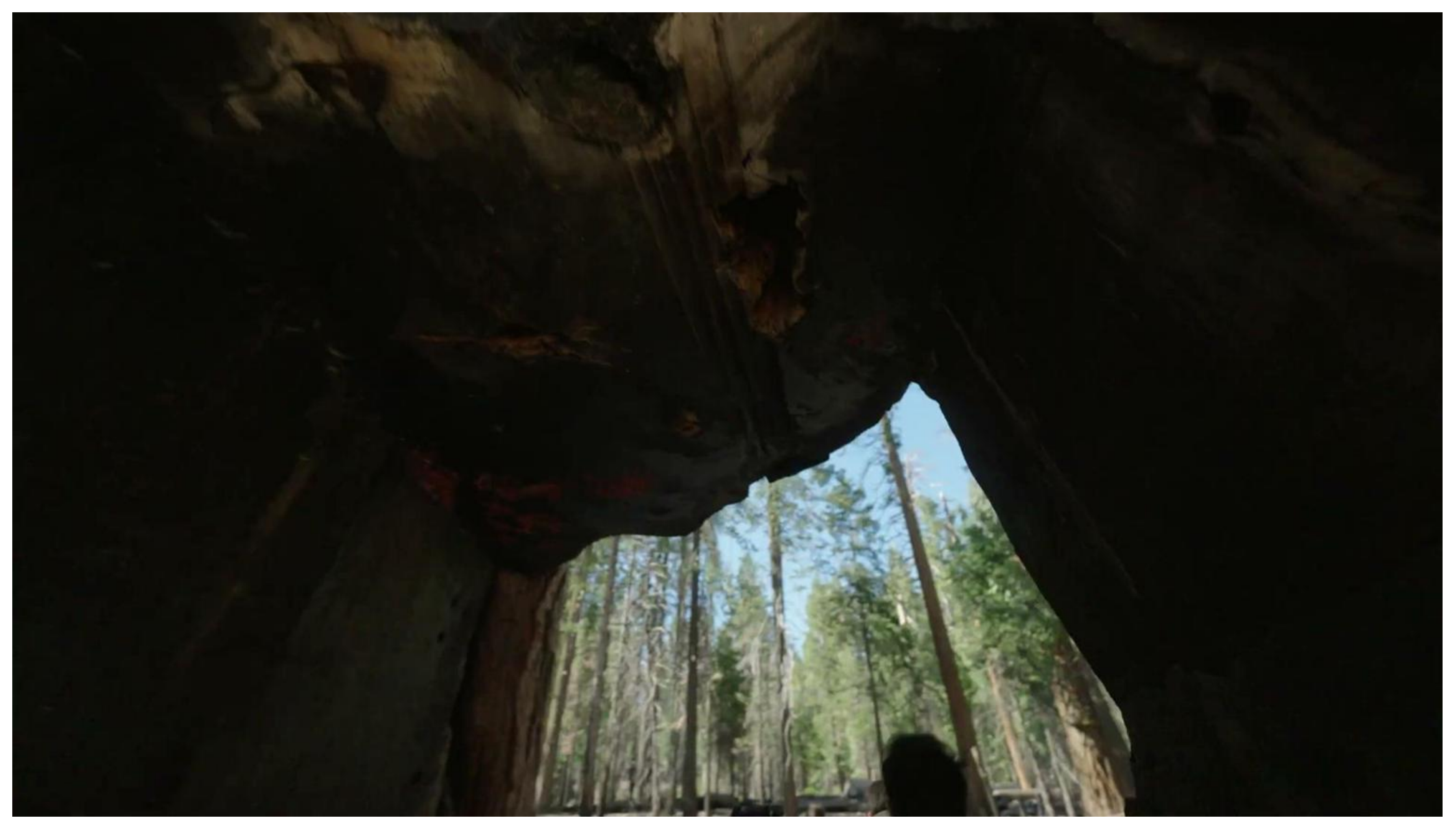
Southern Yosemite

A SMARTER WAY

**TO SELL
THE PARK**

OAKHURST • BASS LAKE • YOSEMITE







YOSEMITE DEMAND IS STRONG

- Top U.S. destination
- Strong international demand
- South Gate = underleveraged



**YOU ALREADY SELL
YOSEMITE
NOW MAKE
IT BETTER**

ENTRANCE RULES & CURRENT FEES

- Entrance fee: \$35 per private vehicle (seven days)
- International surcharge: additional \$100 USD per person over 16.
- Best Choice: The non-resident, America the Beautiful Pass - \$250 (Covers entrance fee & international surcharge for everyone in a private vehicle, or four people on a tour)

PRIVATE VEHICLE



**\$35
(7 DAYS)**

INTERNATIONAL VISITORS



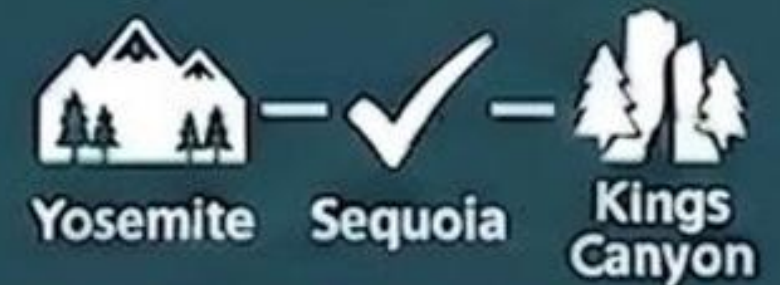
**\$100 USD
SURCHARGE**

AMERICA THE BEAUTIFUL PASS



**\$250 USD
(1 YEAR)**

EXCELLENT VALUE



**COVERS ENTRANCE
AT MANY US PARKS
(Worthwhile for multiple visits)**



YOSEMITE GIANTS

ENDLESS WONDER



MORE THAN

JUST YOSEMITE





BASS LAKE

ONE BASE



MULTIPLE EXPERIENCES



THREE PARKS

ONE EPIC TRIP

OUTBOUND YOSEMITE (NEW)

- Opening Summer 2026
- First new resort in 20 years
- 104+ units +14 traditional rooms
- Infinity pool, restaurant, bar
- Strong group & lifestyle appeal
- Borrow outdoor equipment



RELIABLE + BOOKABLE



The Pines Resort,
Bass Lake



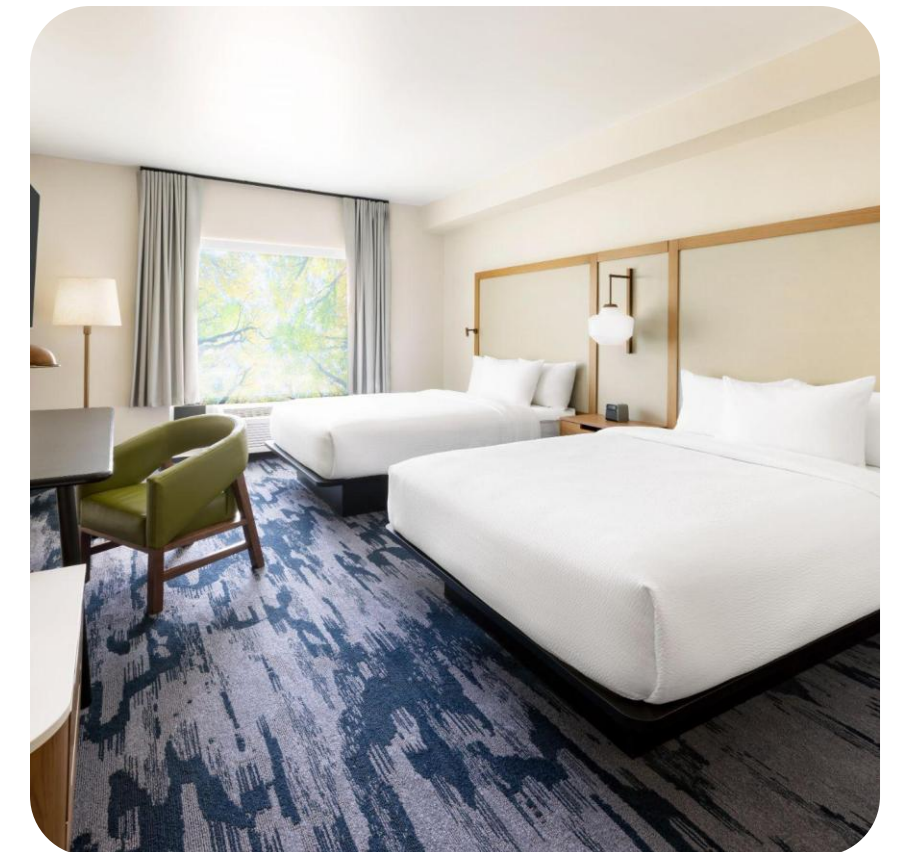
Hogan Hospitality: Holiday Inn,
Hampton Inn, Fairfield Inn



Inelle Hotel,
Marriott Tribute

HOGAN HOSPITALITY GROUP

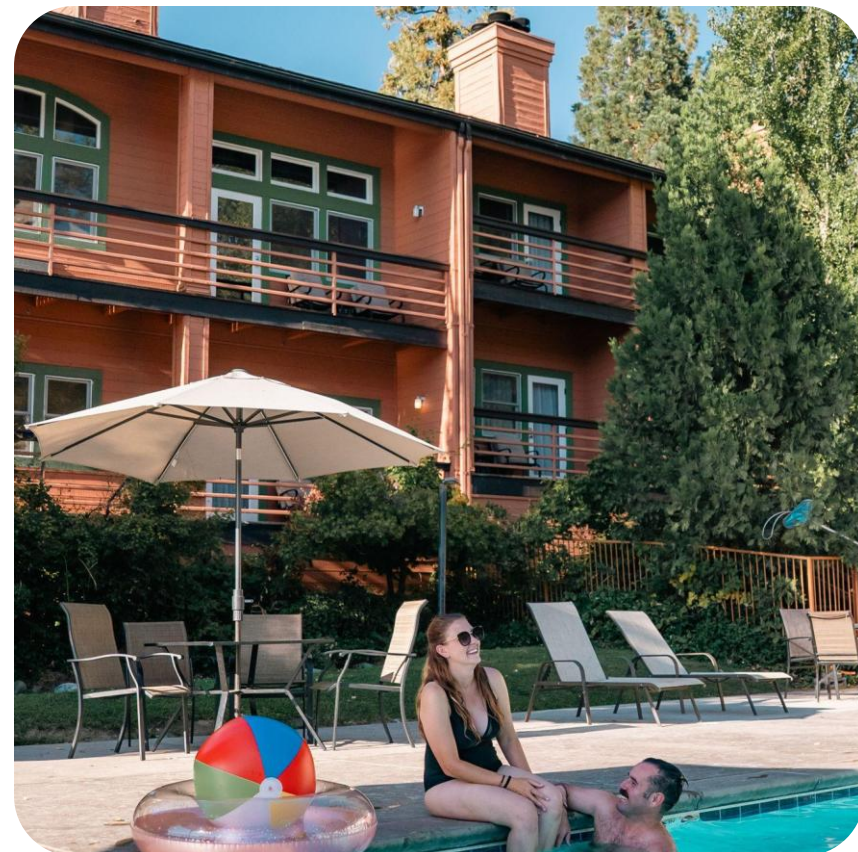
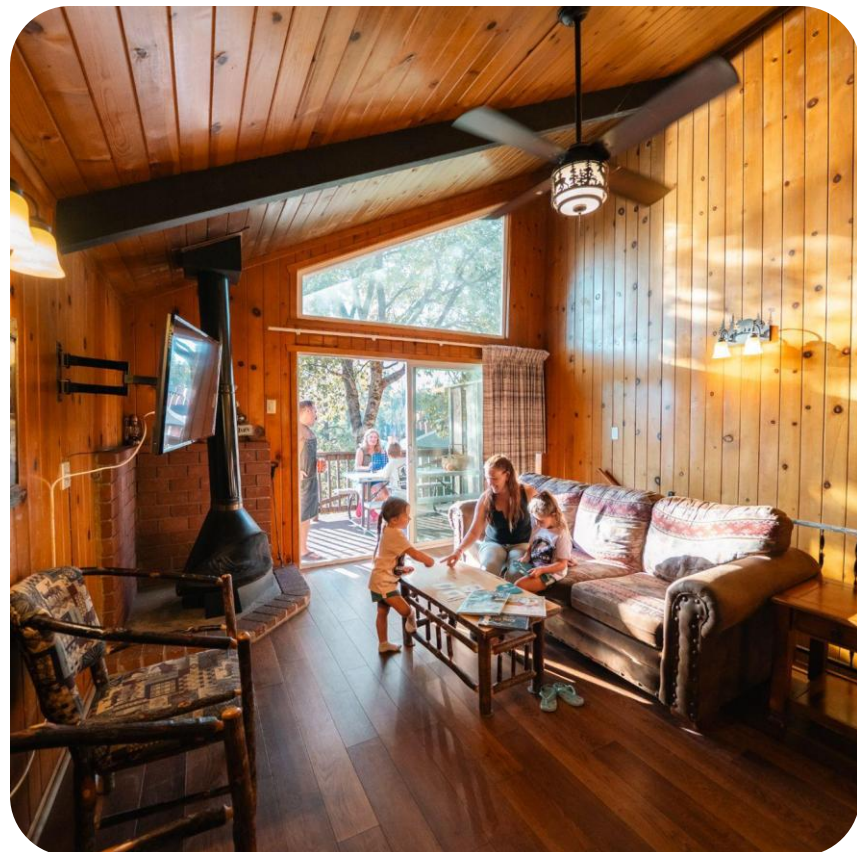
- Three trusted hotel brands conveniently located together along Highway 41
- 13 miles from Yosemite's south entrance
- Complimentary hot breakfast
- Trusted national hotel brands
 - Hampton Inn
 - Fairfield Inn & Suites
 - Holiday Inn Express & Suites





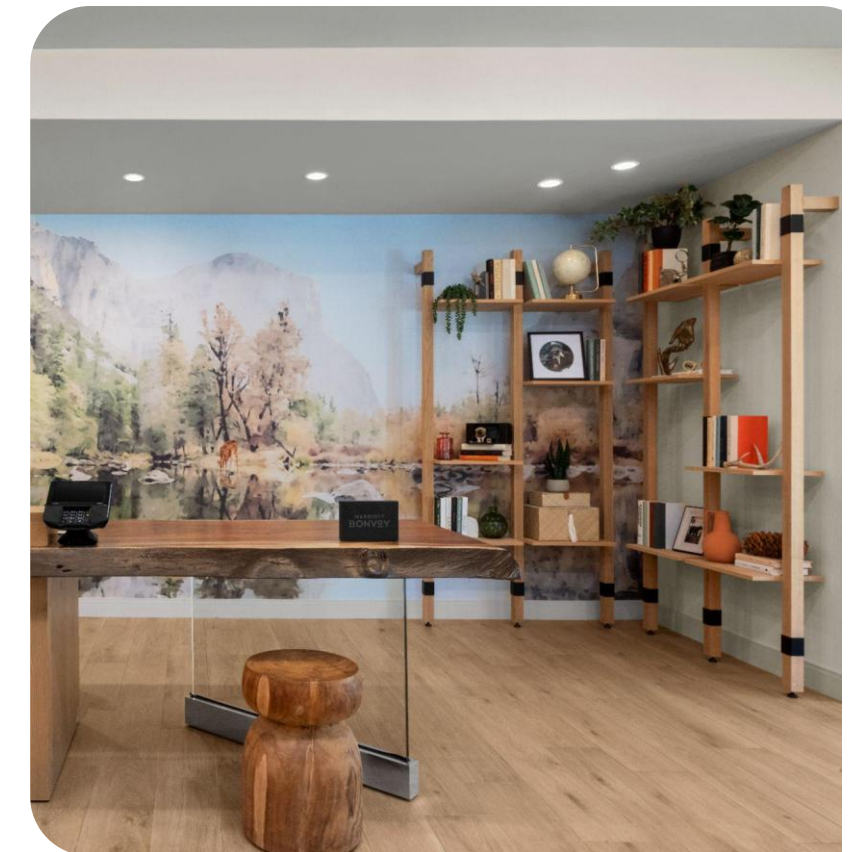
THE PINES RESORT BASS LAKE

- Lakeside mountain getaway with cabins, suites, and private chalets overlooking beautiful Bass Lake
- Just 35 minutes from Yosemite's South Entrance and the famous Mariposa Grove of Giant Sequoia Trees
- Lakeside dining, boat rentals, watersports, fishing, and sunset cruises



THE INELLE MARRIOTT TRIBUTE

- Boutique with modern Sierra style
- 77 rooms, on-site dining at Hemlock Restaurant & Bar
- Minutes from Yosemite, Bass Lake, dining & shopping, in Oakhurst
- Marriott Tribute Portfolio hotel



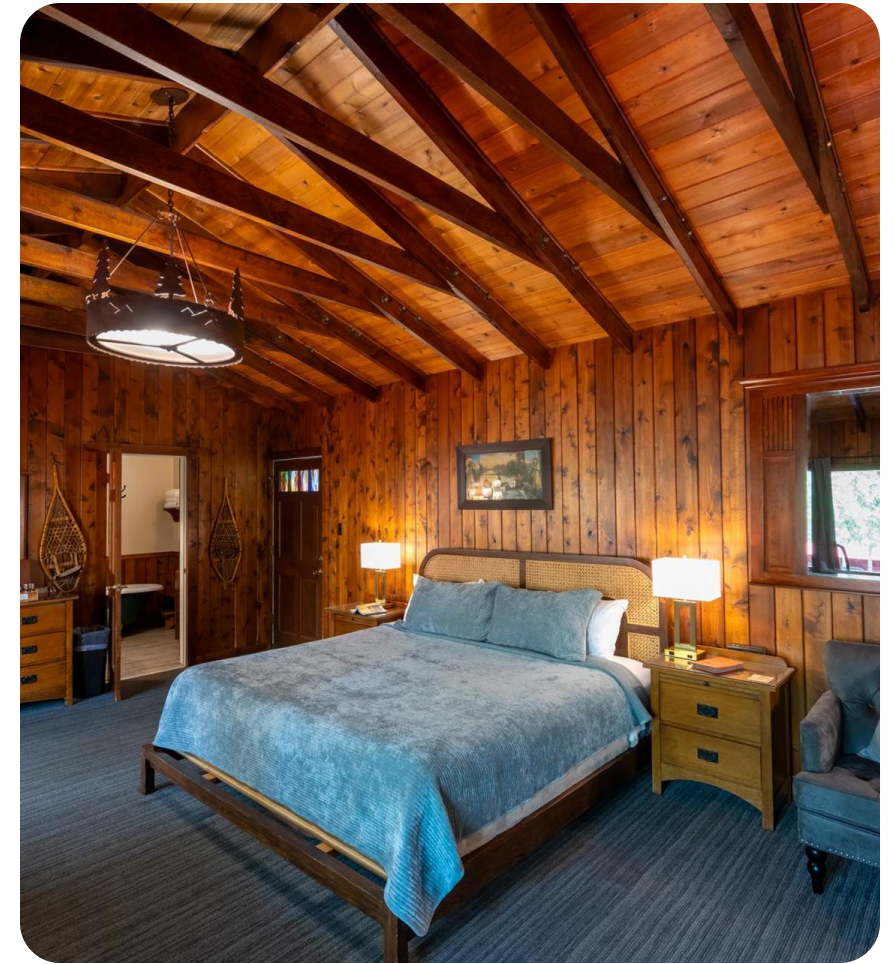


CHÂTEAU DU SUREAU

RELAIS & CHÂTEAUX

THE ELDERBERRY HOUSE

FORBES RATED RESTAURANT



BEYOND EXPECTATIONS

- **Unique and Historic Properties** offering character and charm.
- Spacious **Vacation Homes** for private, comfortable group travel.
- Immersive **Glamping and Camping** experiences to connect with nature.

MORE REASONS TO ADD A NIGHT

- Sugar Pine Railroad
- Mariposa Grove
- Wine Tasting
- No Park Reservations
- Digital Passes Available



MORE YOSEMITE MORE MEMORIES

Brooke Smith

Director of Sales and Marketing
brooke@yosemitethisyear.com

