

VISIT YOSEMITE MADERA COUNTY



WELCOMING COMMITTEE

RECREATE RESPONSIBLY
ACTIVITY & COLORING BOOK



The **Welcoming Committee** invites you to join them on the Fossils to Falls Road Trip. Enjoy this book of puzzles & coloring pages, and always remember to **Recreate Responsibly!**



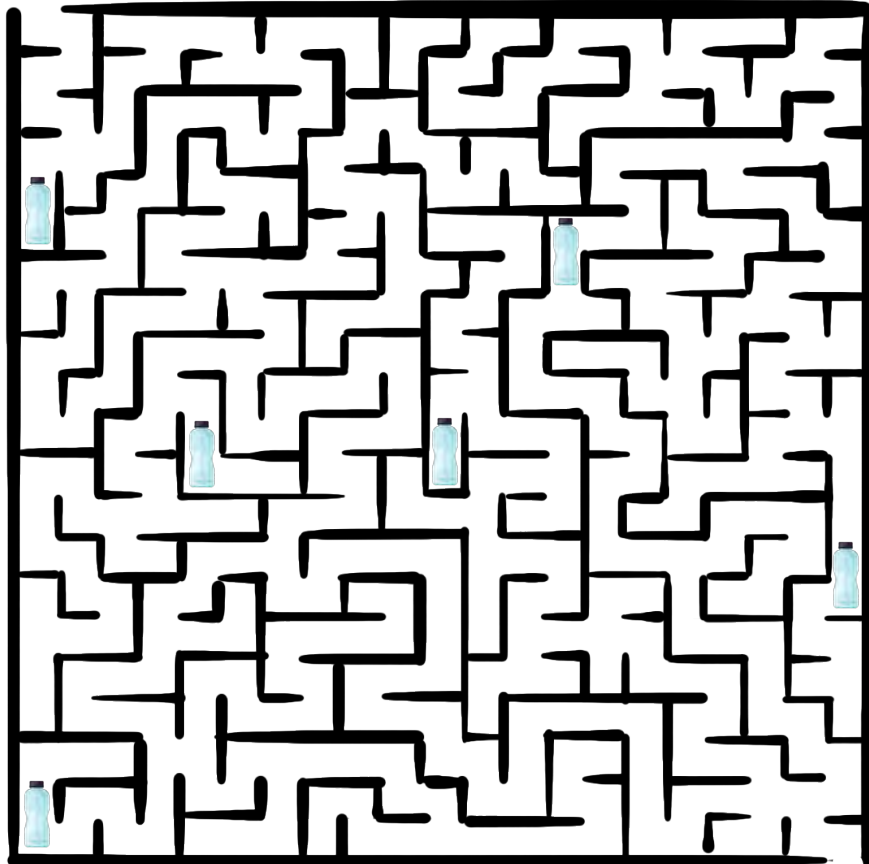
Scan the code to find the answers to the puzzles and games in this book!

HELP MR. MEAD FIND HIS WAY

Mr Mead is thirsty and needs to fill up his reusable water bottle. Help him find his way through the maze to the refill station avoiding the single-use plastic bottles.



START



FINISH

Please No
Single-use
Plastic



Use a refillable
water bottle.

MR. MEAD



CIRCLE WHAT SHOULD GO IN A BEAR BOX

To prevent attracting bears to your campsite, everything with a strong scent should be locked inside a bear box while sleeping or when away from your campsite.



HONEY



DO YOUR PART AS A JUNIOR RANGER

Make a pledge to care for and protect all the wonders in
our national park. Check things off to pledge your part.

1

☐



**KNOW BEFORE
YOU GO**

Check the weather.
Wear the right gear.

2

☐



**CHOOSE THE
RIGHT PATH**

Use marked paths
and stay safe.

3

☐




**TRASH YOUR
TRASH**

We'll keep it clean
with your help.

4

☐



**LEAVE WHAT
YOU FIND**

Take a picture not
a piece of nature

5

☐



**BE CAREFUL
WITH FIRE**

Make sure to put out
fires with water.

6

☐



**RESPECT
WILDLIFE**

Don't feed the animals.
Let them stay wild.

7

☐



**BE KIND TO
OTHER VISITORS**

Share the trails.
Respect the quiet of
nature.

Pledge Signature



MAKE SURE YOUR CAMPFIRE IS COMPLETELY OUT

Connect the dots to learn the most assured way to put out the fire before going to bed. Remember to never leave a campfire unattended.



SIERRA





The Welcoming Committee
invites you to join them on the
Fossils to Falls Road Trip. Enjoy
this book of puzzles & coloring
pages, and always remember
to **Recreate Responsibly!**



Scan the code to find the
answers to the puzzles and
games in this book!

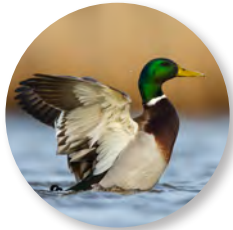
RESPECT NATURE WHEN HIKING AND CAMPING

Follow the path to reach your camping destination. Along the way, be sure to observe all the rules of the trail so that you make your impact on Mother Nature as small as possible.



YOUR FIRST FLIGHT TO BIRDING

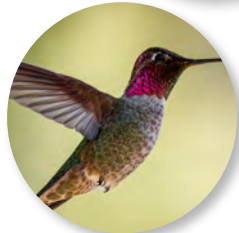
Can you match the name of the bird with its photo?
Draw lines to connect the names with their photos below.



CALIFORNIA
QUAIL



ANNA'S
HUMMINGBIRD



BLACK
HEADED
PHOEBE



EVENING
GROSBEAK



ACORN
WOODPECKER



MALLARD
DUCK

BALD
EAGLE

GREAT
BLUE
HERON

RED-TAILED
HAWK

STELLAR'S
JAY



SIERRA VISTA SCENIC BYWAY

Unscramble the words below.
Match them to the names
on the map. Then enter the
correct number in each box.



- ☐ skacasj wdemaao
- ☐ rdelne egvor fo tgani olseqesua
- ☐ aerirs omno msuemu
- ☐ oldc gnpsrsi tsmumi
- ☐ spegortuue erokolov
- ☐ genderir reloovko
- ☐ onesfr mdoe
- ☐ ilme gihh volekoro
- ☐ otnrh rfko ilml etiS
- ☐ cahr crko
- ☐ esjes sros inabc
- ☐ eoglb kroc



LEAVE NO TRACE PRINCIPLES

Review the seven Leave No Trace principles for kids below,
then find **EACH CAPITALIZED** word in the word search.

S X S A W D M L F X C O D A B
R F W E N X Q E Q B X L I W Z
O L I I L D P A N A D Q K O M
T R K R S P I V H S A R T N J
I R E C E K I E O G F W D K T
S T D S T V F C E Z L I X M E
I P H R P I X L N P L X U W E
V Q A G L E K P Z I E W X O N
B C E D I D C A C A R E F U L
E B L R T R K T L H Z P R U R
F I N D Q O D H E R S S K N A
W S A D G H Y S M Q Q Q R P L

1. **KNOW** before you go
2. Choose the **RIGHT PATH**
3. **TRASH** your trash
4. Leave what you **FIND**
5. Be **CAREFUL** with fire
6. **RESPECT WILDLIFE**
7. Be kind to other **VISITORS**



GET TO KNOW YOSEMITE VALLEY

Match the name of each iconic location
with the number below. Go ahead, give it a try!

☐ EL CAPITAN

☐ SENTINEL ROCK

☐ CLOUDS REST

☐ SENTINEL DOME

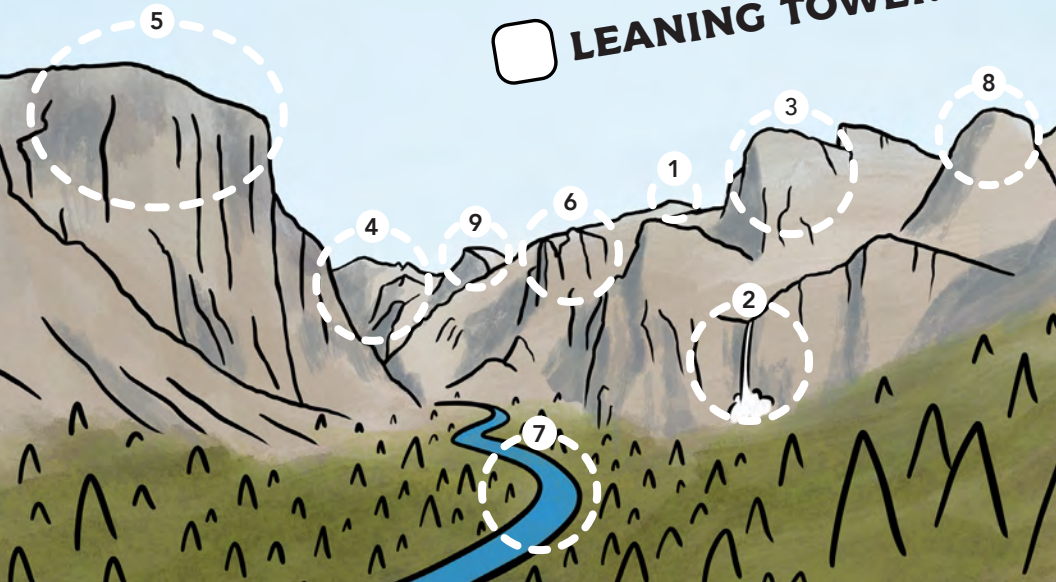
☐ CATHEDRAL ROCKS

☐ BRIDALVEIL FALL

☐ MERCED RIVER

☐ HALF DOME

☐ LEANING TOWER



GALEN

GO TO
NPS.GOV/YOSE
FOR INFO

ALERTS
WEATHER &
ROAD &
INFO &

MARIPOSA GROVE
OF
GIANT SEQUOIAS



MATCH THE FOOTPRINTS



SIERRA NEVADA
RED FOX



BLACK BEAR



RACCOON



SQUIRREL



GREAT
HORNED OWL



BALD EAGLE



CALIFORNIA EBONY
TARANTULA



SABER-TOOTHED
CAT



CALIFORNIA
MULE DEER



HONEY BEE

SANDY





Fossils to Falls Road Trip

(with some adult time too!)

The Fossils to Falls Road Trip begins in the farmlands of the San Joaquin Valley and ends at the grand vistas of Yosemite National Park. Along the way, collect trading cards of the ten native animal characters known as the Welcoming Committee. Find their cards at these popular attractions, then enter for a chance to win a Yosemite Adventure Vacation.

FOSSIL DISCOVERY CENTER

Explore one of the largest collections of middle-Pleistocene era fossils in North America. Here, find the trading card for Mr. Mead, the Saber-toothed Cat, along with the fossilized remains of Columbian Mammoths, 18-ft. Sloths and Dire Wolves. At the mock dig, budding paleontologists can use their imagination to uncover the massive creatures that roamed this land more than 780,000 years ago.



Visit more places, collect more cards and receive more chances to **Win!**



COARSEGOLD

In 1849, newspapers recorded the third-largest gold discovery in California history in present-day Coarsegold. Today, there is still gold in these hills; Coarsegold is rich in history and shopping. Find Nugget, the California Ebony Tarantula, in the many eclectic shops at Coarsegold Historic Village. Plus, don't miss the annual Tarantula Awareness Festival on the last Saturday of October.



SOUTHERN YOSEMITE WINERIES

Madera County has an abundance of agriculture and history. These worlds combine into one of the oldest wine grape-growing regions in the U.S. Enjoy an excellent combination of hospitality and fantastic, award-winning wines. Ask for Honey, the Honeybee, at any of the family-owned wineries including those along the Madera Wine Trail and Yosemite Sierra Wine Road.

- Birdstone Winery
- Fasi Estate Winery
- Ficklin Vineyards
- Karine Wines
- Idle Hour Winery & Kitchen
- Papagni Winery
- Quady Winery
- San Joaquin Wine Company
- Toca Madera Winery



HONEY



OAKHURST

Get to know the largest gateway town of Yosemite National Park, Oakhurst. It lies at the junction of the Golden Chain Highway (CA-41) and the Southern Yosemite Highway (CA-41), just 16-miles from the park entrance. Book the region's top lodging, then stay a while, discovering a host of adventures you never expected to find. Stop at the Visitor Center to meet Sierra, the Black Bear, collect her card and find answers to your travel questions. Get the information on live performances, things to do, historical sites, delicious dining and the Toast of Oakhurst Beverage Tour.



SIERRA

Prospect for fun right here in Madera County!

NUGGET



There's **So Much** to see and do here!

Yosemite National Park

Fish Camp

Oakhurst

Coarsegold

North Fork

YOSEMITE GATEWAY ART CENTER

Oakhurst is a place bursting with creative talent and there's no better place to see that than the Yosemite Gateway Art Center. The Art Center is home to multiple galleries representing art from renowned regional artists working in many styles and mediums. From stunning photography to contemporary sculpture, you can find it here! This hub for art, artists and creative events in the region hosts a wide variety of artist demonstrations and exhibits throughout the year. It is also the place to find the trading card for our most colorful character, Art E. Fox, the Sierra Nevada Red Fox.



Enjoy the Art in its many forms!



ART E. FOX

It's so Easy to Play



RICKY

YOSEMITE MOUNTAIN SUGAR PINE RAILROAD

Travel back in time aboard an historic steam train on a four-mile excursion into the Sierra National Forest. The landmark railroad offers train rides, gold panning, evening programs, a museum, a sandwich shop and a toy store, March through November, weather permitting. Collect Ricky the Raccoon's trading card, then get ready for an exhilarating journey.



Come explore the Heart of California!



RANGER

BASS LAKE

Bass Lake is known for fishing, hiking, mountain biking, shopping and excellent lakeside dining. Many lodging options include camping, cabins, vacation rentals and lakeside resorts.

Three marinas provide boat rentals that range from kayaks to party barges. Find Blake, the Bald Eagle and collect his trading card at: The Pines Resort, The Forks Resort, or Miller's Landing.



BLAKE

Look for my Bald Eagle friends and me soaring above **Bass Lake!**



YOSEMITE NATIONAL PARK

Just inside the park's southern entrance, the Mariposa Grove of Giant Sequoias is home to nearly 500 of these magnificent giants. Visit the Welcome Plaza, near the parking area, to meet Galen, the Great-Horned Owl and collect his card. It is a breeze to travel to the Mariposa Grove Arrival Area via the free shuttle. Visitors may access the famous Grizzly Giant and California Tunnel trees via a five-mile round-trip hike if the shuttle is unavailable.

The last stop and the grand finale of the Fossils to Falls Road Trip, are the magical sights of Yosemite Valley! Tunnel View is an essential destination on any Yosemite visit; see Bridalveil Fall, Sentinel Dome, Half Dome, Clouds Rest and El Capitan from this iconic viewpoint. The trading card for Sandy, the Squirrel, is available for travelers at the Ansel Adams Gallery in



GALEN



NORTH FORK

The town of North Fork has the distinction of being at the center of things - most notably the exact center of California! It's also home to the annual North Fork Loggers Jamboree, the



Sierra Mono Museum and Cultural Center and it's the starting point of the Sierra Vista Scenic Byway. You can find Ranger the California Mule Deer at the Gnarly Carrot and the Sierra Mono Museum.

Only two cards needed to **Win!**

Monthly Prizes Too!



SANDY



Collect a minimum of 2 cards to enter the Yosemite Adventure Contest. Collect more cards for more chances to win!

YosemiteThisYear.com/welcoming-committee

WIN

A YOSEMITE ADVENTURE VACATION!!!

GRAND PRIZE LIST

- 2-night hotel stay at a local area property
- Gift cards for local dining and souvenirs
- **PLUS** Choice of one of the following Adventures:
 - Yosemite
 - Bass Lake
 - Wine Tasting
 - Family
 - Extreme Sierra

CONTEST DATES

- Contest runs through December 31st, yearly
- Multiple prize packages and a yearly grand prize will be given away!

HERE'S HOW

- Collect "Welcoming Committee Member" trading cards by visiting their home locations around Yosemite & Madera County
- Collect 2 or more Member trading cards for a chance to win a Yosemite Adventure Vacation and more!

MORE INFO

Full Contest details are available at:

YosemiteThisYear.com/welcoming-committee

Note: Details subject to change

