

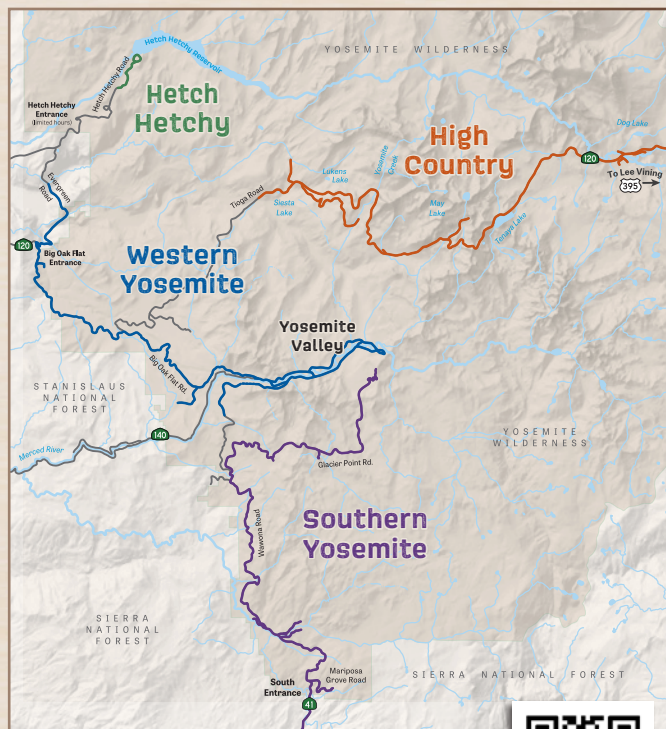


# Hike Like a Local

Exploring the great outdoors offers a chance to connect with nature and enjoy its beauty.

Note that many locations listed do not have services. Please observe the following guidelines so all have a great experience:

- **PLAN AHEAD:** Carry a map, familiarize yourself with the trail, consider hiking with a companion for safety, and let someone know where you're going and when you expect to return.
- **BE PREPARED:** Bring sufficient food, water, sunscreen, a hat, and appropriate clothing layers to adapt to changing weather conditions.
- **FOLLOW TRAIL ETIQUETTE:** Yield to uphill hikers, step aside for faster groups, and maintain a courteous noise level to preserve the tranquility of nature.
- **STAY ON DESIGNATED TRAILS:** Venturing off marked paths can damage fragile ecosystems and increase erosion. Always follow posted signs and remain on established routes.
- **RESPECT WILDLIFE:** Observe animals from a distance. Feeding or approaching wildlife disrupts their natural behaviors and can be dangerous.
- **WHEN NATURE CALLS:** Step well away from trails and water, and pack out your TP.
- **PACK IT IN, PACK IT OUT:** Carry out all trash, leftover food, and personal items to keep trails clean and protect wildlife.



Scan the QR Code for a digital version of this Beyond the Valley brochure



# Learn from a Local



visittuolumne.com



yosemite.com



monocounty.org



yosemitethisyear.com



# EXPLORE BEYOND Yosemite Valley



Begin your day exploring these stunning 'Beyond the Valley' destinations, then enjoy Yosemite Valley in the afternoon—when crowds thin and the views are just as breathtaking.



# High Country

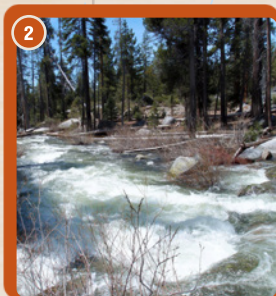
## Lukens Lake

A short hike from Tioga Road leads to Lukens Lake, a small, pretty lake ringed by wildflower-filled meadows in summer. It's an easy, tranquil High Country escape for families and nature photographers alike.



## Yosemite Creek Picnic Area

Picnic along Tioga Road at Yosemite Creek. Shady tables and the soothing sound of the creek make this a refreshing stop for travelers and their leashed pups to relax and refuel.



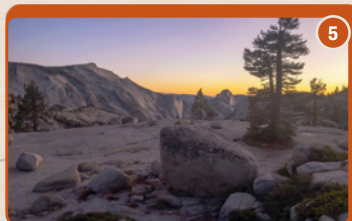
## Porcupine Creek

Stretch your legs by this babbling forest stream, which is the trailhead for the 4.5 mile hike each way to North Dome's epic views and a peaceful roadside respite for travelers seeking a quick nature fix.



## May Lake

Tucked beneath the rugged cliffs of Mount Hoffmann, May Lake is a sparkling alpine gem surrounded by fragrant pine forests and granite peaks. A scenic, 2+ mile round trip hike to this peaceful alpine lake, perfect for picnicking.



## Olmsted Point

Iconic alpine vista point not to be missed, featuring breathtaking views of Half Dome and Yosemite High Country's spectacular glacier carved granite slopes.

## Tenaya Lake

Explore Yosemite's largest natural lake, and discover why the Ahwahneechee named it Pywiack, lake of the shiny rocks. Picnic by the shore, swim or stroll around the glistening lake.



## Pothole Dome

Clamber up family-friendly Pothole Dome at Tuolumne Meadows for effortless 360° views. Kids and adults alike can wander its gentle granite slopes and enjoy panoramic alpine scenery.

## Parsons Memorial Lodge & Soda Springs

See the cold, carbonated water of Soda Springs bubble from the ground near the historic Parsons Lodge in Tuolumne Meadows. This short, level walk combines views, geology and history — a rewarding stop for all ages.

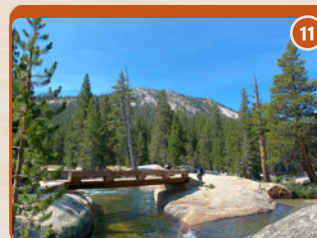


## Lembert Dome

This granite dome hike is a must for lovers of sweeping alpine vistas. A moderately steep ascent rises above Tuolumne Meadows, offering breathtaking 360 degree views of Yosemite's high elevation peaks.

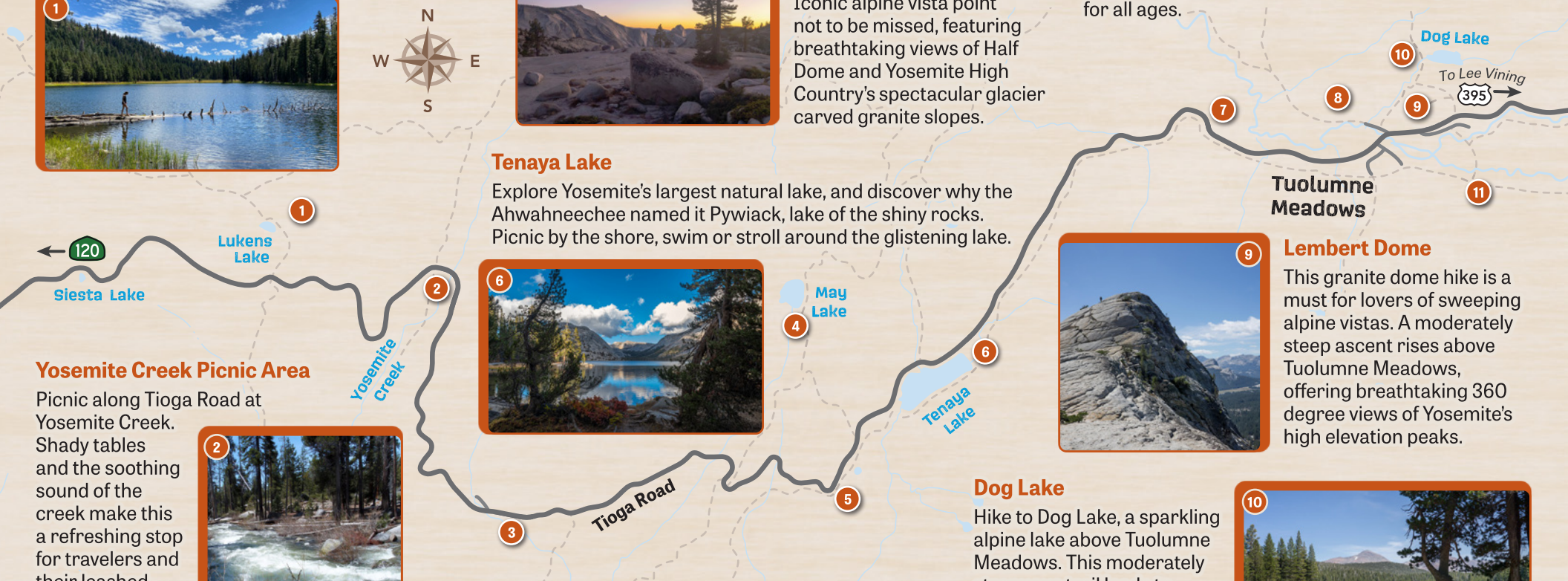
## Dog Lake

Hike to Dog Lake, a sparkling alpine lake above Tuolumne Meadows. This moderately strenuous trail leads to cool mountain waters and wildflower-lined shores — a refreshing retreat for hikers seeking quiet beauty.



## Twin Bridges

Enjoy a stroll on the Pacific Crest Trail to Twin Bridges, two picturesque footbridges over the Lyell Fork of the Tuolumne River. Clear creek views and wildflower meadows make this gentle trail perfect for families.





# Western Yosemite

## Ackerson Meadow

A serene, expansive 400 acre mid-elevation meadow, Yosemite's newest addition. Alive with wildflowers & wildlife, Ackerson is a quiet haven for birdwatching, picnicking and idyllic nature walks.



## Crane Flat Fire Tower Viewpoint

In summer/fall, drive to this historic fire lookout above Crane Flat for a panoramic Sierra vista. Follow the short trail to the lookout tower. Or, snowshoe here in winter/spring!



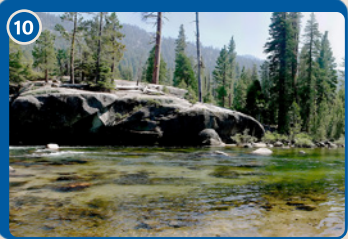
## Tuolumne Grove

A downhill walk leads to this unforgettable grove of giant sequoias, including a fallen tree you can walk through. Less than 3 miles round-trip.



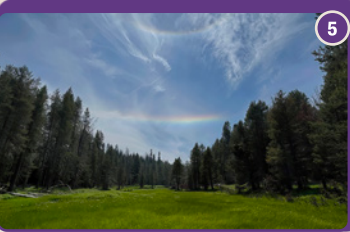
## The Cascades Beach

A riverside haven by the Cascades waterfall, with smooth rocks and shallow pools. Unwind



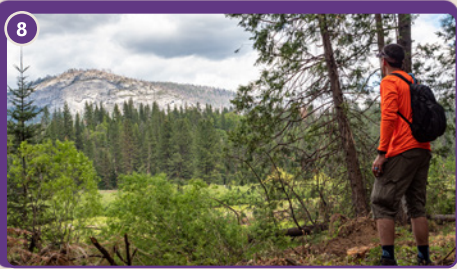
## Sentinel Dome

Hike to the top of this granite dome for 360° panoramic views of Yosemite's high country—including Half Dome and El Capitan. Short, sweet, and incredibly rewarding.



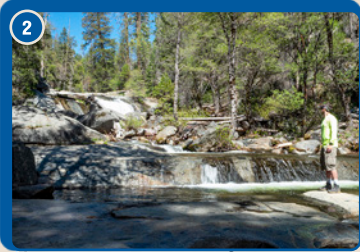
## Wawona Meadow Loop Trail

Enjoy a leisurely 3.5-mile loop around Wawona's broad meadow. This flat, dog-friendly trail is perfect for families, with wildflowers in spring, brilliant fall colors, and peaceful views year-round.



## Hodgdon Meadow

An inviting, tranquil woodland meadow and family-friendly stop. Walk through the campground to enjoy a short trail along the south end of the meadow, perfect for wildflower and wildlife viewing.



Park at the Merced Grove parking area and cross Big Oak Flat Road to the gated trail to start your adventure.

## Rockefeller Tract Sugar Pines Trail

Enjoy a memorable walk through history and nature among towering old-growth sugar pines protected long ago by the Rockefellers.



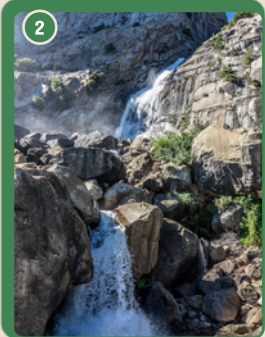
## Hetch Hetchy

Discover Yosemite's quiet Hetch Hetchy Valley, a serene reservoir ringed by granite cliffs and spring waterfalls. Stroll across O'Shaughnessy Dam for breathtaking views, far from the crowds.



## Wapama Falls

A gorgeous 2.5 mile hike each way along the water's edge, with beautiful views throughout, to stunning Wapama Falls, with one of the highest peak water flows in Yosemite.



## Merced Grove

Hike down a serene forest trail to Merced Grove's small stand of grand giant sequoias that inspire awe and reflection. 3 mile round-trip.



## Carlton Falls

With the trailhead located on the Stanislaus National Forest, just outside of the park, stroll into Yosemite along the river's edge to the clear cascading falls, dip your toes and enjoy a picnic.

## Crane Flat Meadows

A tranquil meadow at Crane Flat. In summer, wildflowers abound; in winter, it's a snowy playground. An easy roadside family stop to enjoy nature and spot wildlife.



## Foresta Big Meadow

Wander this gentle mid-elevation meadow and enjoy wildflower blooms, peaceful vistas, wild-life viewing and historic A-frame cabins. A wonderful picnic spot.



## Bridalveil Meadow

A tranquil meadow near the base of Bridalveil Fall. Stroll its edge for iconic views of Yosemite's cliffs and waterfalls. Ideal for picnics, leisurely exploration, and spotting wildlife.



## Taft Point

Enjoy dramatic cliffside views of Yosemite Valley and the dizzying Fissures—deep cracks in the granite with sheer 1,000-foot drops. A must-see, but watch children closely.



## Chilnualna Falls

Discover Chilnualna Falls near Wawona – a series of cascades reached by a challenging uphill trail. Hikers are rewarded with secluded pools, impressive waterfalls, and sweeping views on this less traveled trail.



## Panorama Trail

Enjoy a 5+ mile round trip hike from Glacier Point to beautiful Illilouette Falls. This trail also offers epic, up to 17 mile, full-day adventures.



## Dewey Point

Reach one of the most breathtaking overlooks of Yosemite Valley. A rewarding day hike with lighter foot traffic and a big payoff. Begin at the trailhead at McGurk Meadow.



## Yosemite History Center – Wawona

Travel back in time at this living history center. Explore historic cabins, a covered bridge and old stagecoaches that tell the story of early Yosemite.



## Mariposa Grove

Update copy to: Explore over 500 giant sequoias, including the Grizzly Giant, in Yosemite's Mariposa Grove. A free shuttle runs from the Welcome Plaza from spring through fall. Don't miss the historic Galen Clark Cabin in the upper grove.



# Southern Yosemite

Stay wild, tread lightly.