

VISIT YOSEMITE MADERA COUNTY



WELCOMING COMMITTEE
➤ **ACTIVITY KIT** ◀

VISIT YOSEMITE MADERA COUNTY

TABLE OF CONTENTS!

Our Welcoming Committee (who have been known to act like animals!) invites you to enjoy this fun Children's Activity Kit that shows you the Fossils to Falls Road Trip through Madera County and Yosemite.

TIP: Use of heavier paper will provide more durable results, particularly for the animal cutouts and animal masks.

3 ANIMAL CUTOUTS & TRADING CARDS

Cut out the animals and their accessories for some home-time fun. Use the Trading Cards to learn more about the animals.

10 CREATE YOUR OWN SCENE

Use the Welcoming Committee Coloring Pages to play with the Welcoming Committee in their natural habitat!

11 MOVEABLE PUPPETS

Cut out and use 'brads' to make moveable animals.

19 WELCOMING COMMITTEE CROSSWORD PUZZLE

See if you can fill in the names for each of the Welcoming Committee animals.

20 WELCOMING COMMITTEE FUN QUIZ

How much have you learned from the Storybook?

21 WELCOMING COMMITTEE WORD SEARCH

What words can you find in the jumble?

22 ANIMAL FACE MASKS

Cut out the masks, put them on popsicle sticks or add string and have fun!

TIP: You can be a different animal every time you video chat with friends and family.

The full Storybook, Coloring Pages, and Activity Kit can be found at
YosemiteThisYear.com/Welcoming-Committee





LATIN NAME:

*Haliaeetus
leucocephalus*

It was in 1998 that the first Bald Eagle was spotted at Bass Lake. Currently two nesting pairs, one on each side of the lake, call Bass Lake their home.

BASS LAKE:

Bass Lake is known for fishing, water-sports, hiking, mountain biking, shop-ping, and excellent lakeside dining. Lodging options include camping, cabins, vacation rentals, and full service resorts and marinas.



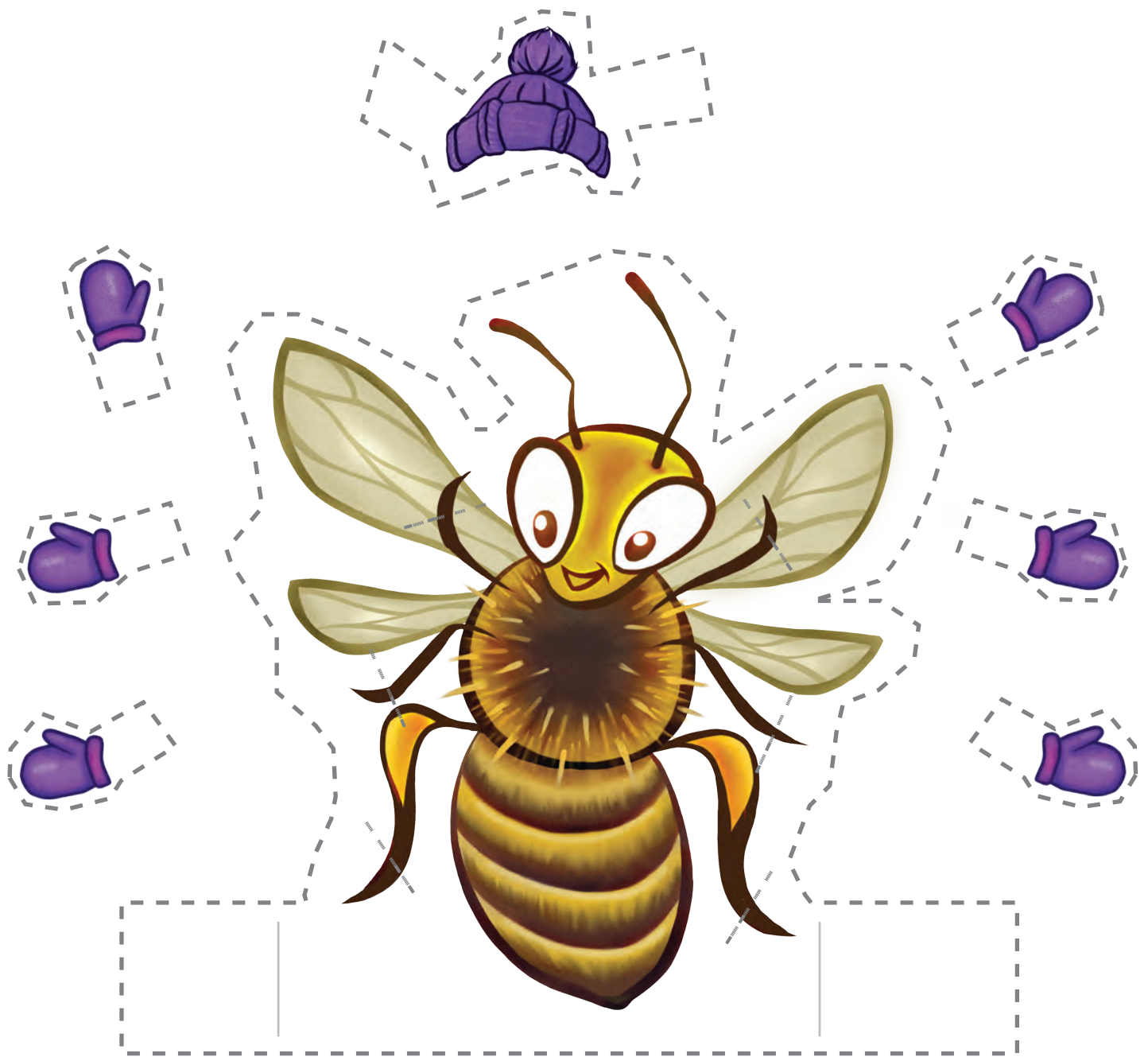
LATIN NAME:

Bubo virginianus

The Great Horned Owl, also known as the hoot owl, is an excellent hunter and is thought to be the spiritual guardian of the Mariposa Grove.

MARIPOSA GROVE OF GIANT SEQUOIAS:

Mariposa Grove is the largest grove in Yosemite and is home to over 500 mature Giant Sequoias. Take the free shuttle from the Mariposa Grove Welcome Plaza into the Mariposa Grove where there are a variety of trails from easy to strenuous within the grove.



LATIN NAME:

Apis mellifera

Honey bees are social, smart, and very hard working. Besides producing delicious honey, they are largely responsible for the pollination of many of the key crops in Madera County.

MADERA WINE TRAIL:

Madera County is 11th in the world for agriculture production by volume, with Almonds being the top seller. Madera County is also known for being one of the oldest grape growing regions in America. Visit the family-owned wineries along the Madera Wine Trail.



LATIN NAME:
Smilodon

This saber-toothed cat roamed Madera County and the Central Valley along with Mammoths, Sloths, Dire Wolves, Camels and Horses during the Middle-Pleistocene era (780,000 years ago).

FOSSIL DISCOVERY CENTER:

Enjoy a unique and exciting experience! With over 15,000 fossils found in the Fairmead Landfill, this is one of the largest collections from the Middle-Pleistocene era. Junior Paleontologists can even experience their own mock dig.



LATIN NAME:

Procyon lotor

The Raccoon is a medium-sized mammal that can be found throughout the United States and is known for its intelligence, craftiness and surprising cleanliness. They can usually be found around trash cans.

YOSEMITE MOUNTAIN SUGAR PINE RAILROAD:

Travel back in time aboard an historic steam train on a 4-mile railroad excursion which is fun for the whole family. The historic railroad offers train rides, gold panning, Thornberry Museum, Railroad Café, and a fun gifts & collectibles store. Open April through October.



LATIN NAME:

Sciurus griseus

One of the most common critters in the lower elevations of the Sierra Nevada is the Squirrel. They can be seen gathering nuts, chattering, and leaping from tree to tree.

TUNNEL VIEW:

Tunnel View is one of the most photographed vistas in the world and is a must stop for all visitors to Yosemite National Park. From this incredible viewpoint you can see iconic spots such as El Capitan, Half Dome, and Bridalveil Fall among many other of Yosemite's treasures.



LATIN NAME:

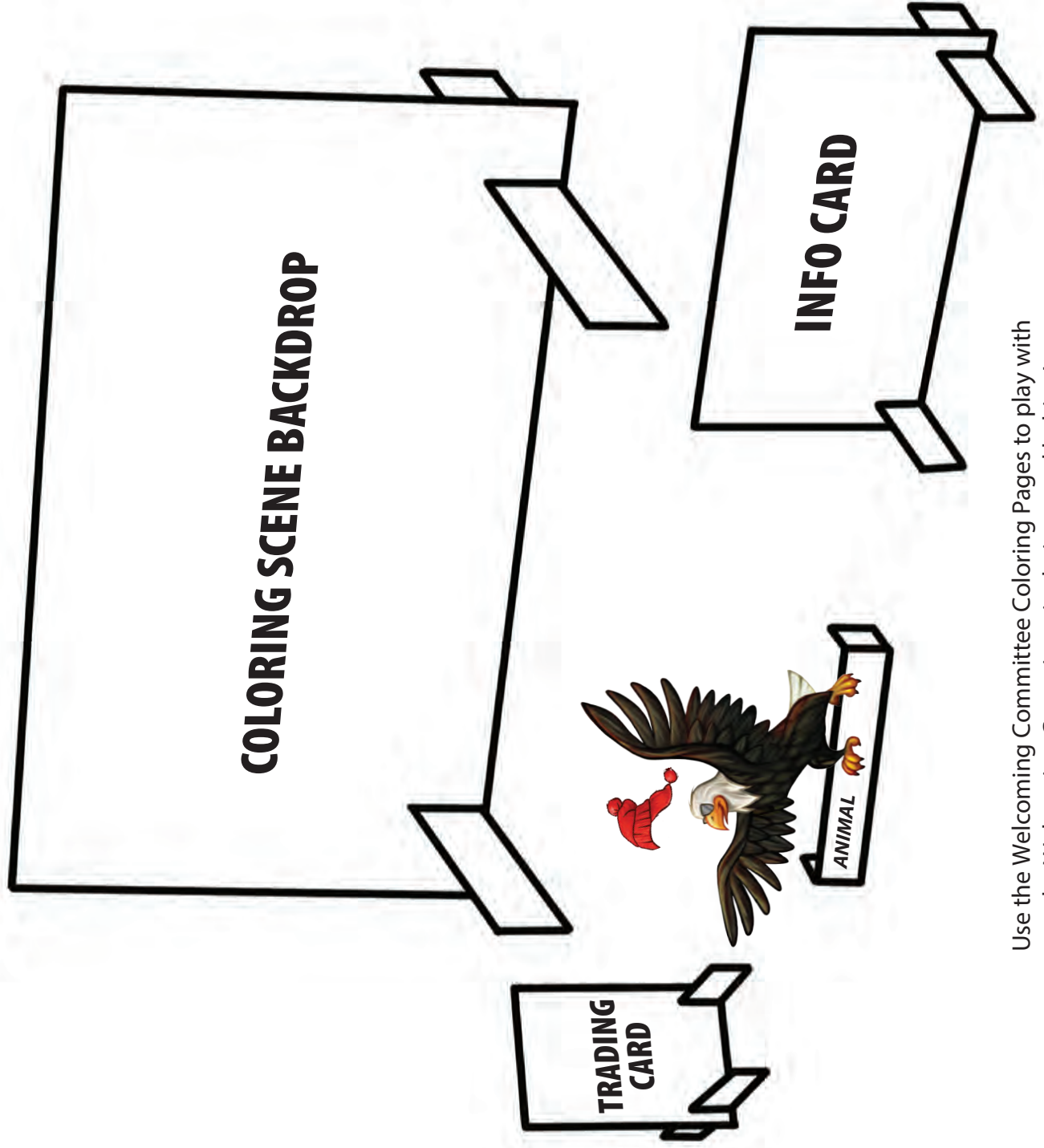
Ursus americanus

Black bears can call much of the Sierra Nevada their home. They are omnivores (they eat just about anything) and come in a variety of colors, from black, to cinnamon and even blonde!

OAKHURST:

Oakhurst, being the largest gateway community to Yosemite, has a wide array of lodging and dining options. Oakhurst is home to the World Famous Talking Bear as well as museums & art galleries, thrift & gift shops, brewery, winery, distillery, outdoor adventures and more.

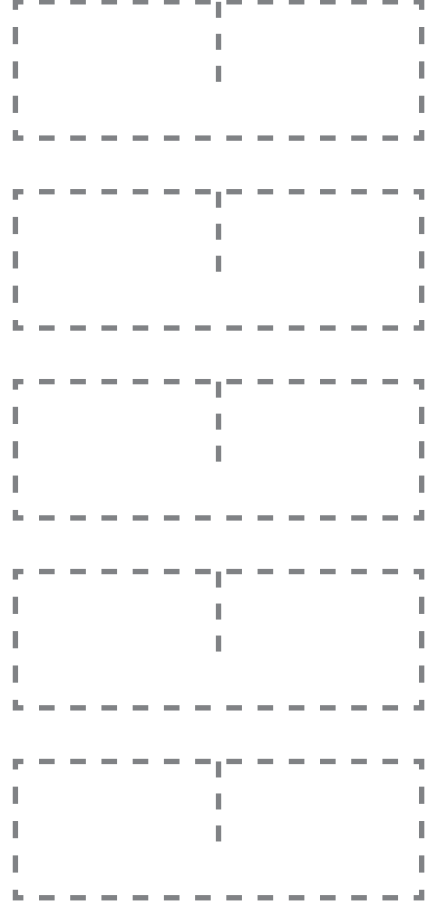
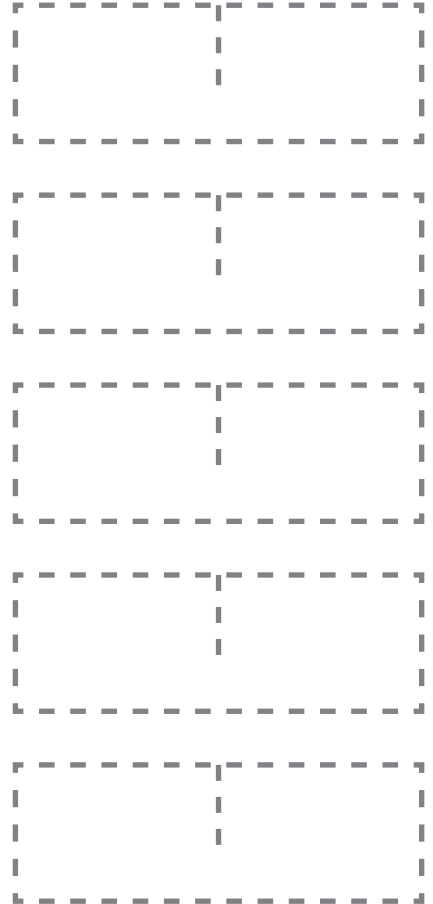
CREATE YOUR OWN SCENE



Use the Welcoming Committee Coloring Pages to play with
the Welcoming Committee in their natural habitat!



STANDS FOR COLORING SCENES



TRADING CARD / INFO CARD STANDS



BLAKE



- Step 1:** Print onto thick paper, or print onto regular paper and glue to card for more support.
- Step 2:** Cut out the animal
- Step 3:** Poke holes on the dots
- Step 4:** Attach arms with paper fasteners (brads)
- Step 5:** Enjoy





GALEN



- Step 1:** Print onto thick paper, or print onto regular paper and glue to card for more support.
- Step 2:** Cut out the animal
- Step 3:** Poke holes on the dots
- Step 4:** Attach arms with paper fasteners (brads)
- Step 5:** Enjoy



RICKY



- Step 1:** Print onto thick paper, or print onto regular paper and glue to card for more support.
- Step 2:** Cut out the animal
- Step 3:** Poke holes on the dots
- Step 4:** Attach arms with paper fasteners (brads)
- Step 5:** Enjoy





MR. MEAD



- Step 1:** Print onto thick paper, or print onto regular paper and glue to card for more support.
- Step 2:** Cut out the animal
- Step 3:** Poke holes on the dots
- Step 4:** Attach arms with paper fasteners (brads)
- Step 5:** Enjoy





SANDY



- Step 1:** Print onto thick paper, or print onto regular paper and glue to card for more support.
- Step 2:** Cut out the animal
- Step 3:** Poke holes on the dots
- Step 4:** Attach arms with paper fasteners (brads)
- Step 5:** Enjoy

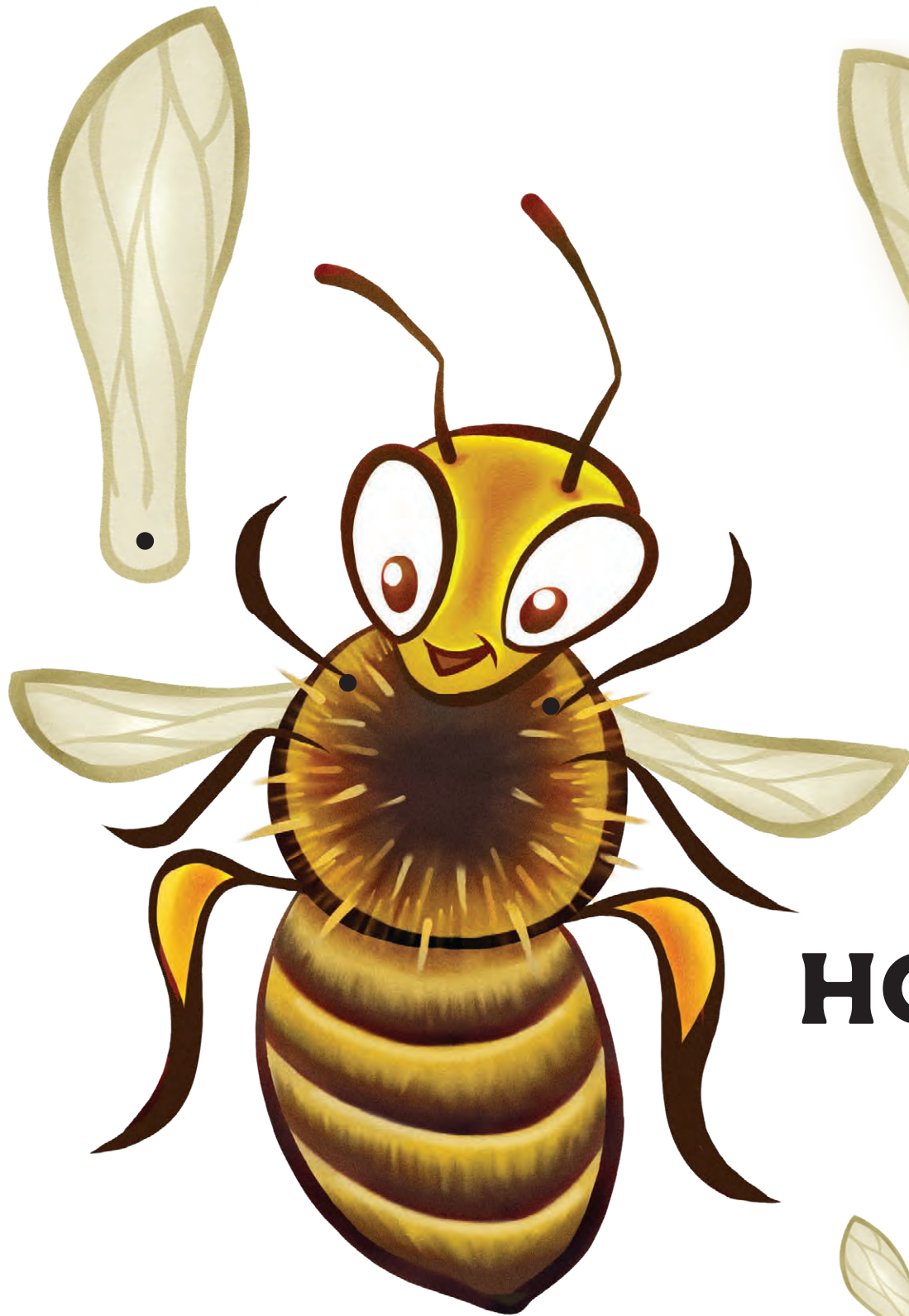




SIERRA



- Step 1:** Print onto thick paper, or print onto regular paper and glue to card for more support.
- Step 2:** Cut out the animal
- Step 3:** Poke holes on the dots
- Step 4:** Attach arms with paper fasteners (brads)
- Step 5:** Enjoy



HONEY

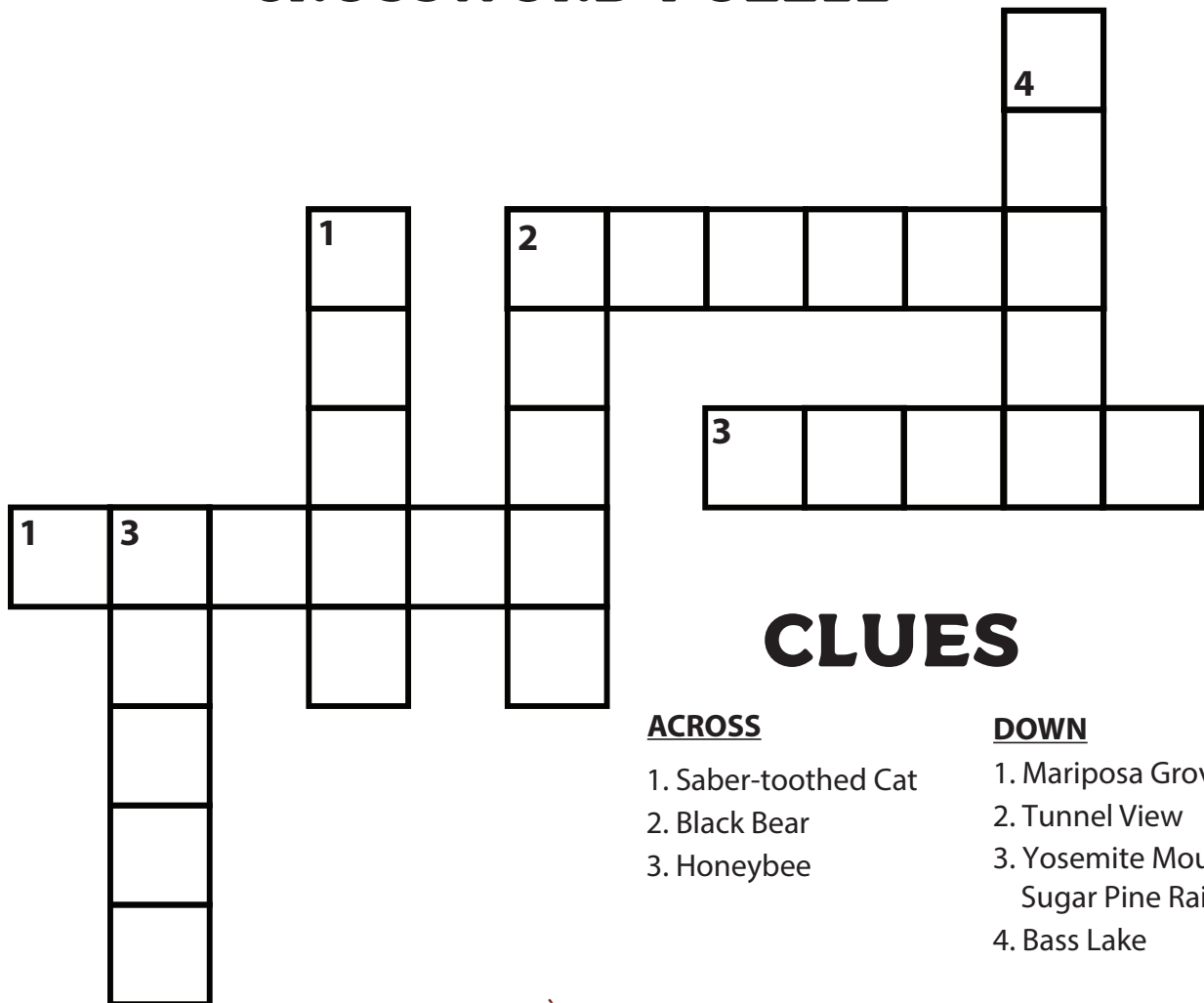


- Step 1:** Print onto thick paper, or print onto regular paper and glue to card for more support.
- Step 2:** Cut out the animal
- Step 3:** Poke holes on the dots
- Step 4:** Attach arms with paper fasteners (brads)
- Step 5:** Enjoy



VISIT YOSEMITE MADERA COUNTY

WELCOMING COMMITTEE CROSSWORD PUZZLE



CLUES

ACROSS

1. Saber-toothed Cat
2. Black Bear
3. Honeybee

DOWN

1. Mariposa Grove
2. Tunnel View
3. Yosemite Mountain
Sugar Pine Railroad
4. Bass Lake



VISIT YOSEMITE MADERA COUNTY

WELCOMING COMMITTEE QUIZ - WHERE DO WE LIVE? -



GALEN



MR. MEAD



SANDY

1 - Who lives at the Yosemite Mountain Sugar Pine Railroad?

BLAKE

MR. MEAD

RICKY

2 - What kind of animal is BLake that can be seen fishing at Bass Lake?

BLACK BEAR

BALD EAGLE

SQUIRREL

3 - Where can you find Sierra?

OAKURST VISITOR
CENTER

BASS LAKE

FOSSIL DISCOVERY
CENTER

4 - Galen lives here:

BASS LAKE

MADERA WINE
TRAIL

MARIPOSA GROVE OF
GIANT SEQUOIAS

5 - Who can you find along the Madera Wine Trail?

BLAKE

HONEY

SANDY

6 - Who is the oldest animal in the Welcoming Committee?

GALEN

MR. MEAD

HONEY

7 - You can see Sandy here...

MADERA
WINE TRAIL

TUNNEL VIEW

YOSEMITE MOUNTAIN
SUGAR PINE RAILROAD



RICKY



BLAKE



HONEY



SIERRA

ANSWERS: 1: RICKY, 2: BALD EAGLE, 3: OAKHURST VISITOR CENTER, 4: MARIPOSA GROVE OF GIANT SEQUOIAS, 5: HONEY, 6: MR. MEAD, 7: TUNNEL VIEW

VISIT YOSEMITE MADERA COUNTY

WELCOMING COMMITTEE WORD SEARCH

R	M	M	D	H	G	R	E	A	T	H	O	R	N	E	D	O	W	L	X
T	A	M	N	S	H	H	X	D	R	S	T	E	A	M	T	R	A	I	N
M	D	W	B	L	A	C	K	B	E	A	R	N	M	F	K	K	P	T	N
W	E	R	H	K	T	Z	W	H	X	X	C	Q	E	M	E	R	Y	T	G
K	R	H	W	I	N	E	T	R	A	I	L	L	A	K	E	A	N	S	Z
B	A	R	R	E	I	S	F	M	V	N	V	V	E	U	A	P	K	R	Z
L	C	H	V	F	N	J	R	D	M	E	K	L	G	L	X	L	K	U	T
E	O	O	B	L	P	M	J	B	D	L	G	F	P	W	Z	A	B	H	A
T	U	N	Q	U	E	Z	A	E	C	A	B	K	A	S	E	N	O	K	N
I	N	E	O	A	H	W	W	D	E	G	R	H	L	A	E	O	T	A	H
M	T	Y	D	J	P	U	F	D	A	B	T	F	B	N	A	I	X	O	Y
E	Y	N	Q	C	Z	Y	L	G	S	V	A	Z	S	D	Q	T	W	O	G
S	Y	K	C	I	R	A	J	B	P	D	E	S	Z	Y	V	A	Q	J	S
O	F	M	B	B	B	G	V	Z	T	D	D	N	S	T	S	N	P	Q	M
Y	N	X	T	P	E	E	B	Y	E	N	O	H	A	L	W	N	U	H	V
P	S	L	I	S	S	O	F	U	C	U	W	H	P	R	A	I	F	R	V
S	M	I	L	O	D	O	N	U	J	S	U	H	A	T	R	K	Z	D	P
B	N	D	W	C	H	O	W	C	H	I	L	L	A	R	S	E	E	H	G
G	Z	L	F	C	F	F	I	I	F	I	W	S	E	O	X	X	I	M	L
N	R	A	C	C	O	O	N	C	B	Q	K	L	M	P	E	Y	Z	S	I

WORD LIST:

Bald Eagle
 Bass Lake
 Black Bear
 Blake
 Chowchilla
 Fossils
 Galen
 Great Horned Owl
 Honey
 Honeybee
 Lake
 Madera County
 Mr Mead
 National Park
 Oakhurst
 Raccoon
 Ricky
 Sandy
 Sierra
 Sierra Nevada
 Smilodon
 Squirrel
 Steam Train
 Wine Trail
 Yosemite





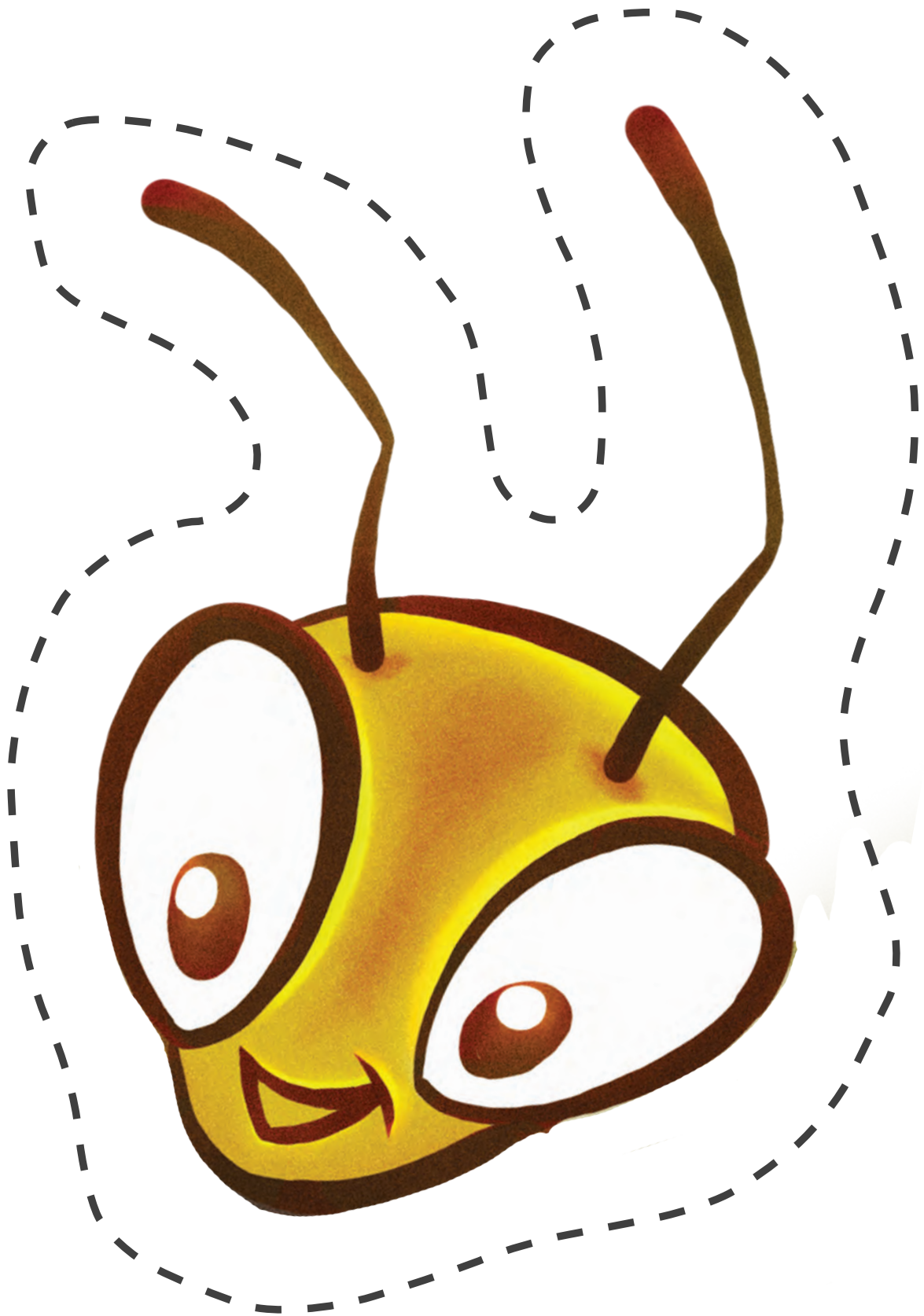
BLAKE

Cut out mask and
tape/stick to a
popsicle stick or
attach string.
Enjoy!



Cut out mask and tape/
stick to a popsicle stick or
attach string. Enjoy!

GALEN



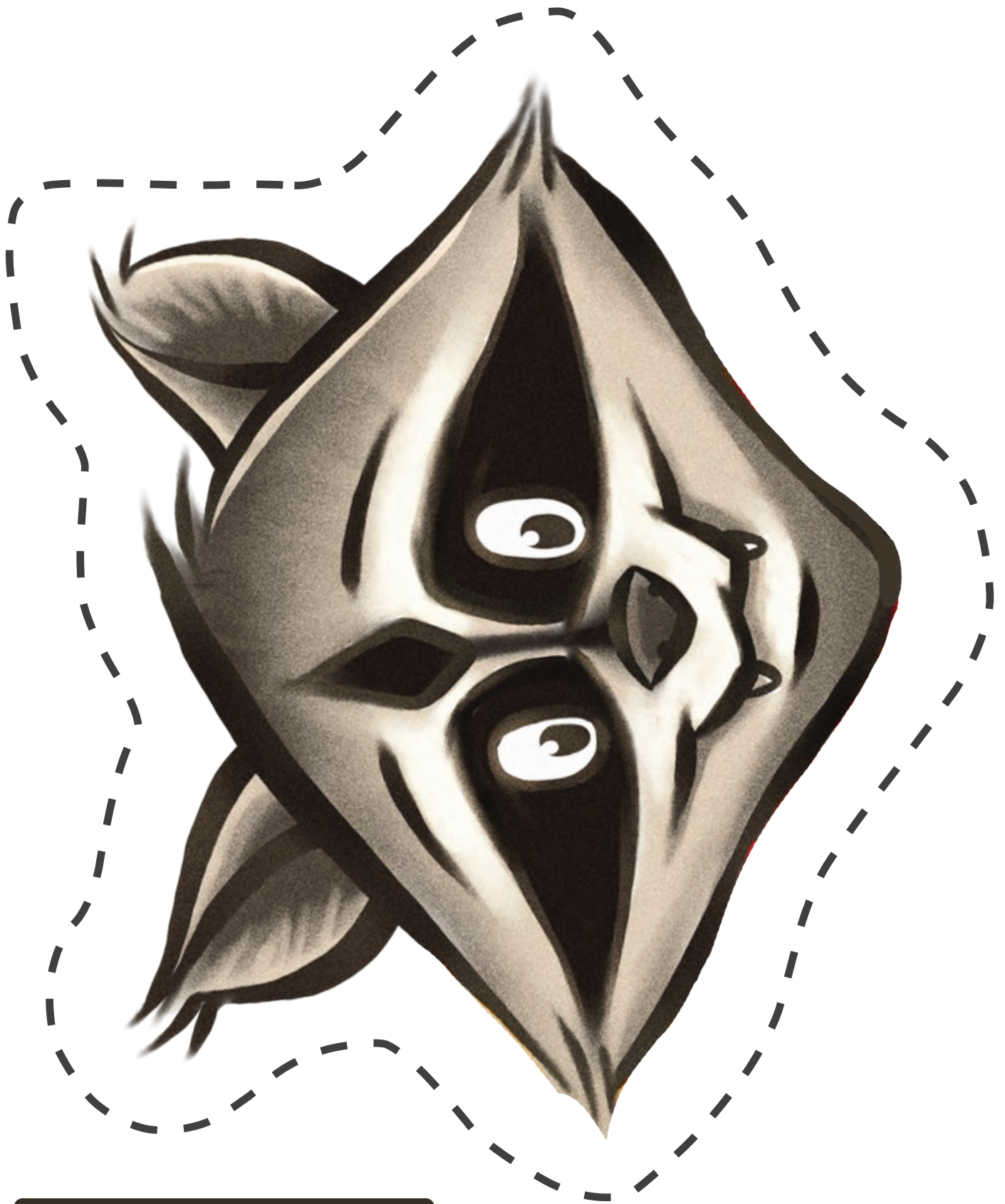
HONEY

Cut out mask and tape/
stick to a popsicle stick or
attach string. Enjoy!



Cut out mask and
tape/stick to a
popsicle stick or
attach string.
Enjoy!

MR. MEAD



Cut out mask and tape/
stick to a popsicle stick or
attach string. Enjoy!

RICKY



Cut out mask and tape/
stick to a popsicle stick or
attach string. Enjoy!

SANDY



Cut out mask and tape/
stick to a popsicle stick or
attach string. Enjoy!

SIERRA